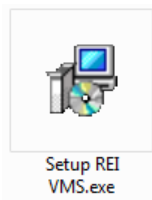


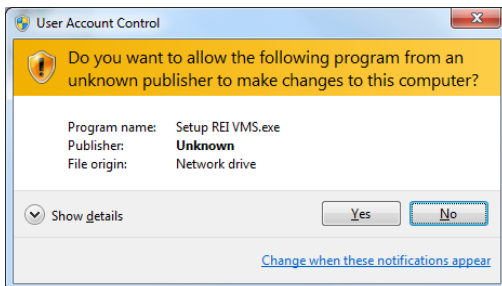
Software Installation

To install the REI VMS:

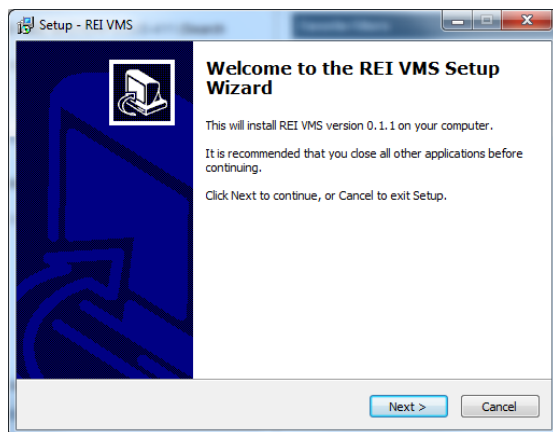
- 1) Locate the installation program, "Setup REI VMS.exe" on your CD-ROM and double click the icon.



- 2) If the User Account Control screen is shown, click 'Yes'.



- 3) When the 'Welcome Screen' shows, follow the instructions on the screen.

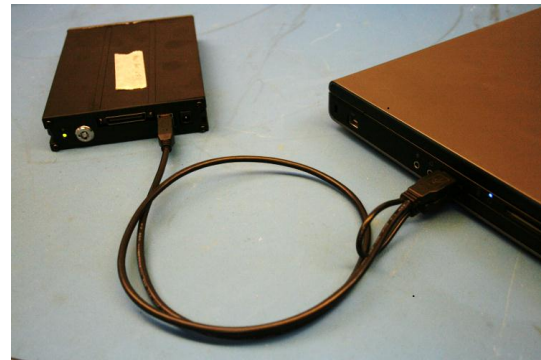


Viewing Hard Drive Video

- 1) Unlock the Hard Drive from the DVR by turning the key from the "Lock" to the "Unlock" position. Firmly pull the Hard Drive out of the BUS-WATCH® Device.



- 2) Connect the Hard Drive to the computer using the provided USB Cable.



- 3) Find and double click the icon REI VMS on your Windows Desktop.

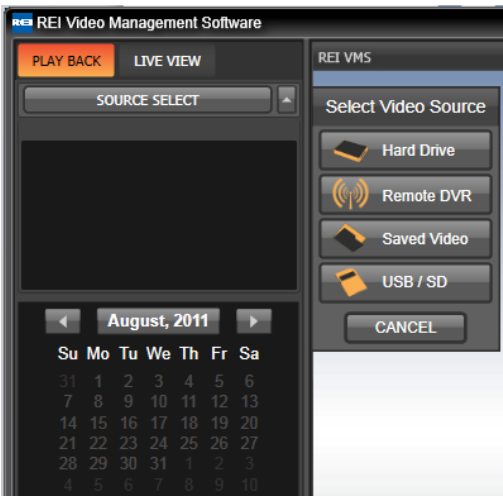


Viewing Video (Continued)

- 4) The default window should appear like the below window. The details of each button will be detailed in other sections.



- 5) Click 'SOURCE SELECT' and then select the button for 'Hard Drive'.

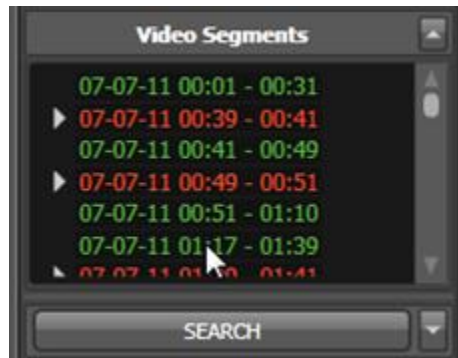


- 6) The Hard Drive will populate the Calendar and then the Video Segments list. To begin playback, you may:

- a) Find and select the 'Play' button



- b) Double-click and item in the Video Segments list



- c) Select a location on the Time Bar:



REI has 24/7 technical support to assist you. If you have any questions please call the service hotline at:

1-877-726-4617 (Toll Free)



Quick-Start

PC Specifications

HD400

RECOMMENDED REQUIREMENTS

- Operating System: Windows 7
- Processor: Intel Core i3 CPU
- RAM: 4GB
- Hard Disk Space: 35 MB for software, 400GB or more for video
- CD-ROM required for installation
- 10/100 Base-T Network Interface Card / Controller
- One USB 2.0 Controller
- DirectX-compatible sound card
- Video Card: 512 MB nVidia GeForce GTX460 or AMD HD6850 or better
- Resolution: 1600x1200 32k colors or better
- DirectX 9.0c

HD800

RECOMMENDED REQUIREMENTS

- Operating System: Windows 7
- Processor: Intel Quad Core i5 or better
- RAM: 6GB or better
- Hard Disk Space: 35 MB for software, 1TB or more for saved video
- CD-ROM required for installation / DVD+/-RW for archival if applicable
- 10/100 Base-T Network Interface Card / Controller
- At least two USB 2.0 Controllers
- USB 3.0 Controller
- SD Card Reader (if applicable to end use)
- DirectX 9.0c compatible sound card
- Video Card: 1GB nVidia GeForce GTX660 or AMD HD6870 or better
- Resolution: 1920x1200 with 32k colors or better